

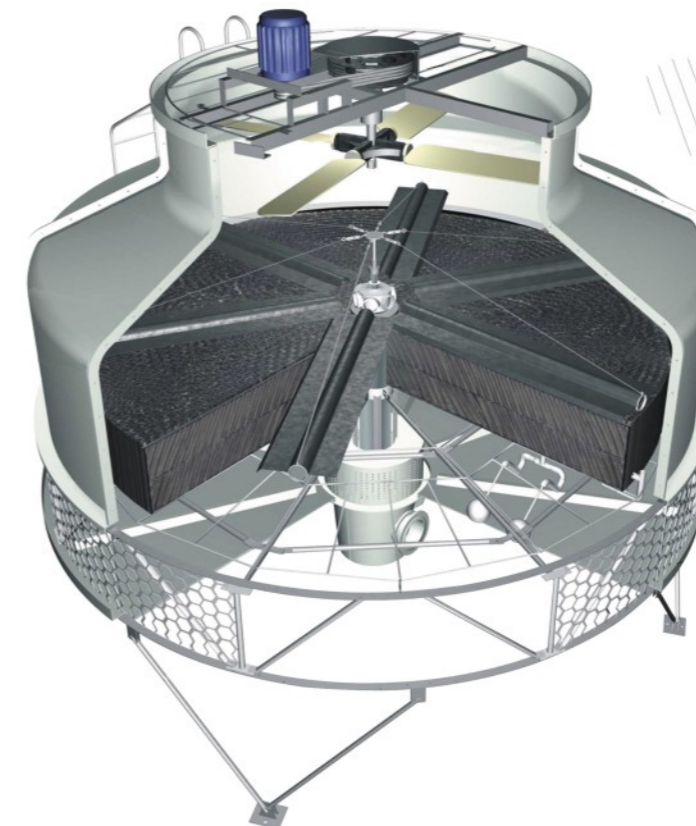


MST

MST

www.mesanct.com

e-mail: sales@mesanct.com



MKT Series
Counter Flow Induced Draft

- Specifications & Design are subject to change without notice.
- One year warranty under normal operation.
- All rights reserved.

2013-06L/MKT/M



For over 40 years, the MESAN Group has engaged in the engineering and manufacturing of high quality, high efficiency evaporative cooling equipment. Through hard work, ethics, and a constant pursuit of excellence, MESAN has become a leader in the cooling tower industry in Asia. Today, MESAN continues to play a vital role in the development of new technologies and products, and is proud to have been selected as a key supplier for many renowned projects in the global market.



Most MESAN products are CTI certified. The company has been certified by ISO-9001 quality management system and ISO-14001 environmental management system. MESAN's focus on engineering, research and development, quality management and excellent customer service, is the powerful combination that drives the MESAN brand up on a constant and steady growth. The many patents granted, are proof of MESAN's strive for delivering new environmentally friendly technologies and energy efficient products for the global markets.



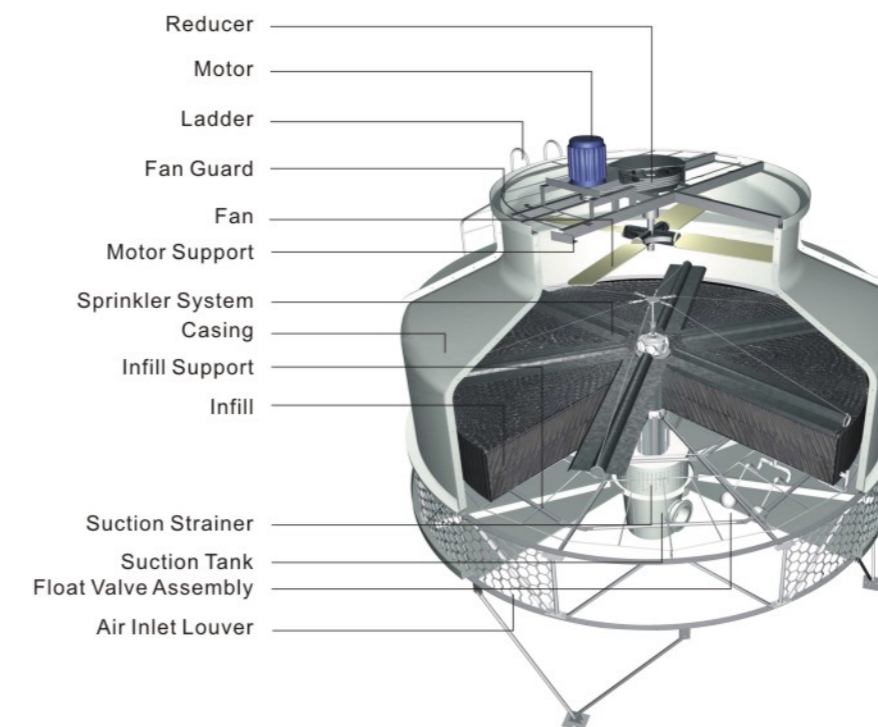
MESAN USA strategically located at the center of the Americas continent, in Miami, Florida, USA, consolidates MESAN Group's global presence and reiterates its commitment to provide world-class products for an ever-expanding market.

MESAN USA offers local presence, local inventory of equipment and spare parts and bilingual technical support as well as customer service, in English and Spanish. All products offered by MESAN USA have been engineered to meet and exceed all codes and standards applicable in this hemisphere.

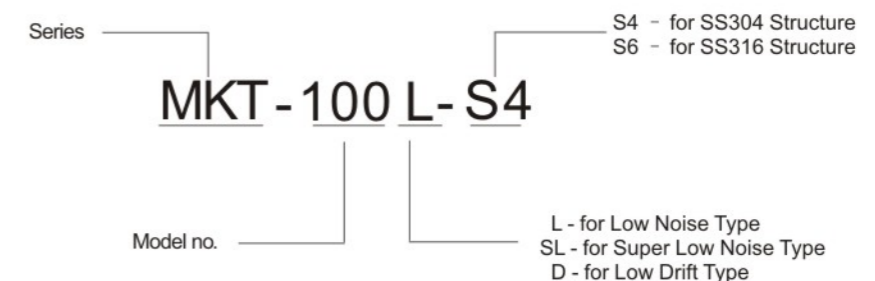
The MKT series is a cost-effective, induced-draft counterflow cooling tower. Its round shape makes it an all-around performer, under any prevailing winds direction, it also allows for low restriction to airflow resulting in very low energy consumption.

The MKT Series is available in 34 models with capacities ranging from 6m³/h to 1000 m³/h. Low Noise, Super Low Noise & Low Drift models are available to meet your requirements.

Components



Model Designation



Trust MESAN with your evaporative cooling needs.

Components

Motor

TEAO type, IP55 enclosure, class F insulation, high efficiency, and low noise. Specially designed to operate within the high-humidity environment of a cooling tower.

Fan

High efficiency axial aluminum alloy fans with innovative low drag, aerodynamic airfoil blade design, adjustable pitch blades and low-noise.*

Note: * Models MKT-6 to MKT-60 use ABS plastic fans.

Reducer

4 KW and larger fans, are driven by low-noise v-belt reducers. Our reducers have very sturdy design with large diameter, high tensile strength shafts; NSK permanently lubricated sealed bearings, isolated from the airstream within a sealed enclosure. Multi-grooved V-belts are designed to withstand the rigors of the humid environment and ensure long and reliable operation.

FRP Components

Hand-laid fiberglass with E-glass chopped strand mat, unsaturated polyester resin and UV-resistant stabilized gel coat, combine to provide excellent corrosion resistance, structural integrity and long service life with minimum maintenance.

Structural Frame

Our structure made of hot-dipped galvanized steel or SS-304/316 stainless steel (optional) to minimize rust and corrosion.

Water Distribution

Designed for low water pressure drop, our rotary sprinkler system, efficiently and evenly distributes the water over the entire heat exchange surfaces, ensuring dependable thermal performance. Our unique brass sprinkler head, lasts for the life of the tower, compared to other brands' aluminum sprinkler heads that have to be replaced several times over the service life of the cooling tower.

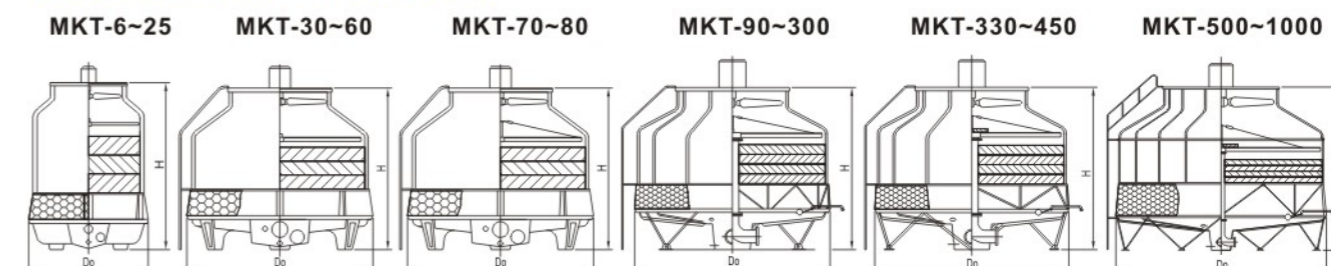
Infill

Infill design maximizes the contact surface, allowing for improved heat transfer between water and air, while offering the lowest resistance to air flow, for reduced pressure drop and lowest energy consumption.

Air Inlet Screen

Made of corrosion-resistant PVC, the air inlet screen keeps airborne debris, and other foreign objects, from entering the water basin and getting sucked by the pump. Optional FRP louver is available upon request.

Product Technical Data



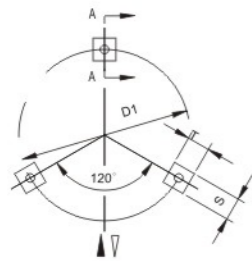
Model	Water Flow (m³/h)	Dimension (mm)		Fan Diameter mm	Motor kw	Air Flow (m³/h)	Weight (kg)		Water Pressure Drop kpa
		Do	H				Dry	Operating	
MKT-6	6	930	1395	584	0.18	4600	48	120	20
MKT-8	8	930	1625	584	0.18	4800	53	130	20
MKT-10	10	1175	1495	760	0.37	7000	65	190	20
MKT-12	12	1175	1780	760	0.37	7600	72	200	20
MKT-16	16	1375	1840	760	0.37	9000	79	210	20
MKT-20	20	1375	2100	760	0.55	10700	95	290	20
MKT-25	25	1615	1890	884	0.75	15100	124	495	20
MKT-30	30	1780	2090	884	0.75	18100	150	615	20
MKT-35	35	1870	2070	884	1.1	21100	190	735	25
MKT-40	40	1870	2070	1184	1.5	24100	210	755	25
MKT-50	50	2100	2285	1184	1.5	30200	270	970	25
MKT-60	60	2100	2285	1184	2.2	32000	310	1020	25
MKT-70	70	2450	2350	1470	2.2	42200	335	1140	25
MKT-80	80	2450	2750	1470	2.2	42600	350	1165	25
MKT-90	90	2950	2635	1470	3	54300	525	1610	30
MKT-100	100	2950	2860	1470	3	56000	580	1685	30
MKT-125	125	3320	2750	1780	4	75500	730	2065	30
MKT-150	150	3700	3420	1780	4	80100	1030	2800	30
MKT-175	175	4100	3530	2360	5.5	105600	1300	3275	30
MKT-200	200	4100	3530	2360	5.5	118000	1370	3395	30
MKT-225	225	4400	3620	2360	5.5	120000	1490	4180	30
MKT-250	250	4400	3720	2360	7.5	133500	1600	4335	30
MKT-275	275	4860	4070	2360	7.5	146800	1830	5320	40
MKT-300	300	4860	3700	2940	7.5	160000	1850	5340	40
MKT-330	330	5520	4330	2940	11	199000	2340	7370	40
MKT-370	370	5520	4330	2940	11	200000	2500	7600	40
MKT-400	400	5960	4800	3330	11	241500	3050	8900	40
MKT-450	450	5960	4800	3330	15	248500	3260	9190	40
MKT-500	500	6600	4780	3330	15	301800	3830	12200	50
MKT-600	600	6600	5310	3630	18.5	320500	4275	12745	50
MKT-700	700	7600	5730	3630	22	373800	5670	17955	50
MKT-800	800	8100	6150	4200	22	427500	6640	17960	60
MKT-900	900	8800	6090	5000	22	543500	8500	21830	60
MKT-1000	1000	8800	6090	5000	30	550000	8600	21920	60

Notes:

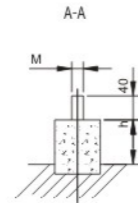
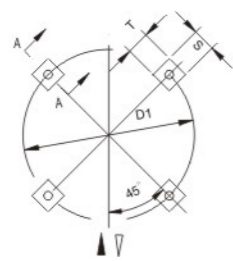
- 1) Nominal water flow is defined as rate of water cooled from 37°C to 32°C with 28°C wet-bulb temperature.
- 2) Satisfactory performance is based on precise selection, proper system design and installation in a clean and well-ventilated location.

Foundation

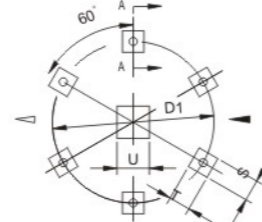
MKT-6~20



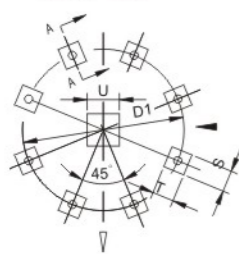
MKT-25~80



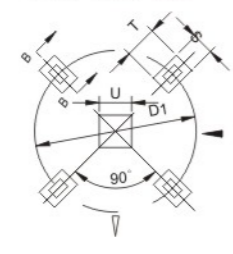
MKT-90~100



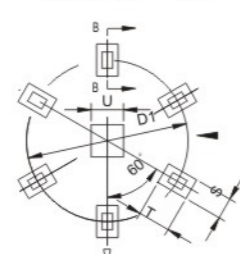
MKT-125



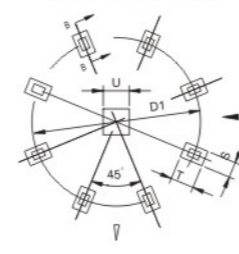
MKT-150~300



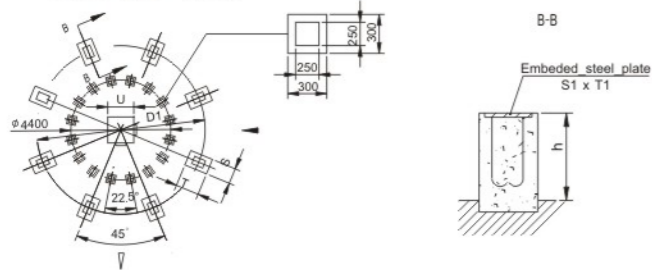
MKT-330~450



MKT-500~700



MKT-800~1000

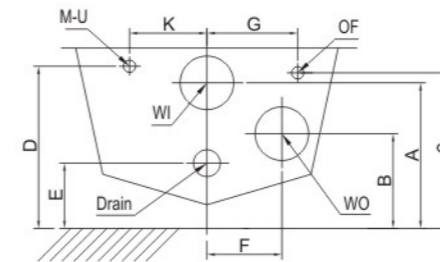


Model	D1 mm	S mm	T mm	M	h mm
MKT-6	600	250	250	M10	300
MKT-8	600	250	250	M10	300
MKT-10	878	250	250	M10	300
MKT-12	878	250	250	M10	300
MKT-16	1060	250	250	M10	300
MKT-20	1060	250	250	M10	300
MKT-25	1275	250	250	M10	300
MKT-30	1430	250	250	M10	300
MKT-35	1505	250	250	M10	300
MKT-40	1505	250	250	M10	300
MKT-50	1715	250	250	M10	300
MKT-60	1715	250	250	M10	300
MKT-70	1950	250	250	M10	300
MKT-80	1950	300	300	M10	300

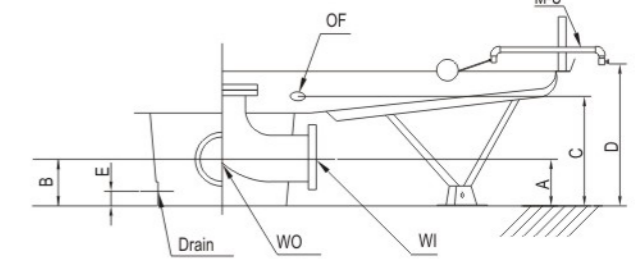
Model	D1 mm	U mm	S mm	T mm	S1×T1 mm	h mm
MKT-90	2810	600	300	300	200 × 200	300
MKT-100	2810	600	300	300	200 × 200	300
MKT-125	3210	600	300	300	200 × 200	300
MKT-150	3570	600	300	400	200 × 300	300
MKT-175	4000	600	300	400	200 × 300	300
MKT-200	4000	600	300	400	200 × 300	300
MKT-225	4300	600	300	400	200 × 300	300
MKT-250	4300	600	300	400	200 × 300	300
MKT-275	4700	600	300	400	200 × 300	300
MKT-300	4700	600	300	400	200 × 300	300
MKT-330	5300	600	300	400	200 × 300	300
MKT-370	5300	600	300	400	200 × 300	300
MKT-400	5800	600	300	400	200 × 300	300
MKT-450	5800	600	300	400	200 × 300	300
MKT-500	6500	800	500	600	300 × 300	300
MKT-600	6500	800	500	600	300 × 300	300
MKT-700	7500	800	500	600	300 × 300	300
MKT-800	8000	800	600	700	300 × 300	400
MKT-900	8700	800	600	700	300 × 300	400
MKT-1000	8700	800	600	700	300 × 300	400

Piping Connections

MKT-6~80



MKT-90~1000



Model	Piping Connection (mm)						Dimension (mm)							
	WI	WO	OF	Drain	M-U	QF	A	B	C	D	E	F	G	K
MKT-6	40	40	25	25	15	-	210	110	215	220	80	90	120	100
MKT-8	40	40	25	25	15	-	210	110	215	220	80	90	120	100
MKT-10	50	50	25	25	15	-	220	125	235	250	90	105	130	145
MKT-12	50	50	25	25	15	-	220	125	235	250	90	105	130	145
MKT-16	50	50	25	25	15	-	220	155	270	275	90	115	150	180
MKT-20	50	50	25	25	15	-	220	155	270	275	90	115	150	180
MKT-25	80	80	25	25	15	-	250	145	290	325	90	125	160	145
MKT-30	80	80	25	25	15	-	290	140	310	340	85	155	155	155
MKT-35	80	80	25	25	20	-	280	160	315	325	85	155	155	170
MKT-40	80	80	25	25	20	-	280	160	315	325	85	155	155	170
MKT-50	100	100	40	25	20	-	250	180	330	385	100	160	180	190
MKT-60	100	100	40	25	20	-	250	180	330	385	100	160	180	190
MKT-70	100	100	40	25	20	-	345	275	435	445	145	180	195	220
MKT-80	100	100	40	25	20	-	345	275	435	445	145	180	195	220
MKT-90	125	125	40	40	25	-	155	155	280	700	60	-	-	-
MKT-100	125	125	40	40	25	-	155	155	280	700	60	-	-	-
MKT-125	150	150	40	40	25	-	155	155	550	750	60	-	-	-
MKT-150	150	150	50	40	25	25	240	240	620	990	60	-	-	-
MKT-175	150	150	80	40	25	25	330	330	620	1030	60	-	-	-
MKT-200	200	200	80	40	25	25	240	240	620	1030	60	-	-	-
MKT-225	200	200	80	40	25	25	240	240	620	1070	60	-	-	-
MKT-250	200	200	80	40	25	25	240	240	620	1070	60	-	-	-
MKT-275	200	200	80	40	25	25	240	240	620	1100	60	-	-	-
MKT-300	200	200	80	40	25	25	240	240	620	1100	60	-	-	-
MKT-330	250	250	100	50	50	50	240	240	620	1300	100	-	-	-
MKT-370	250	250	100	50	50	50	240	240	620	1300	100	-	-	-
MKT-400	250	250	100	50	50	50	240	240	620	1320	100	-	-	-
MKT-450	250	250	100	50	50	50	240	240	620	1320	100	-	-	-
MKT-500	250	250	100	80	50	50	240	240	720	1380	100	-	-	-
MKT-600	250	250	100	80	50	50	240	240	720	1380	100	-	-	-
MKT-700	300	300	100	80	50	50	340	340	900	1560	100	-	-	-
MKT-800	350	350	100	80	50	50	340	340	900	1560	100	-	-	-
MKT-900	350	350	100	80	50	50	340	340	900	1630	100	-	-	-
MKT-1000	350	350	100	80	50	50	340	340	900	1630	100	-	-	-